



Large split-case pumps

The most energy-efficient pumps on the market



Flygt



ITT Industries
Engineered for life

Higher efficiency, bigger savings

Large pumps consume significant quantities of energy. So even a small increase in efficiency translates into a considerable decrease in costs.

Flygt's large split-case pumps are the most efficient pumps available. Backed up by over 125 years of experience as Allis Chalmers, Flygt pumps are quite simply better designed and better made.

On top of this, we tailor every single pump to its exact duty point. And that means even bigger energy savings.

More reliable, less downtime

With over a century of market feedback, we've built in reliability in dozens of ways. Here are just a few:

- Heavy-duty shaft and bearings – experience shows that quality always pays off in the long-run.
- Heavy-duty casing – Rugged foot-mounted design to resist external forces and vibration. Casings designed to withstand high working pressures with minimum distortion and are 100% hydrostatically tested per Hydraulic Institute standards.
- Balanced design – Dual volute casing to reduce radial forces on a selection of casings, ensuring minimal shaft deflection and low bearing loads. Ideal when pumps must periodically operate at capacities above or below design capacity or at interrupted high head. Combined with double suction impeller for axial balance, the Flygt split-case series is designed for high reliability and low maintenance.

You decide

- With an extensive range of hydraulic units, we provide pumping for all kinds of different media. Each pump is customized to meet each specific application.
- Numerous drives are available such as voltage, enclosures, single and variable speeds. The pumps can be driven by motors with gearboxes or even by steam turbines.
- Although cast iron is the standard metal used, we can supply units in virtually any material.

Large pumps for a wide range of applications

- Water supply
- Cooling water
- Process water
- River and sea water
- Irrigation
- Dewatering
- General petrochemical applications
- Shipbuilding

Cost-effective installation

Flexible arrangements offers lower installation costs.

The standard pump has suction and discharge nozzles in the lower casing. For many models, bottom suction and vertical installations can be supplied to fit existing piping. The pumps are also available with clockwise or anti-clockwise rotation.

Three compelling advantages:

- *Top-rated efficiency*
- *Unsurpassed reliability*
- *Simple maintenance*

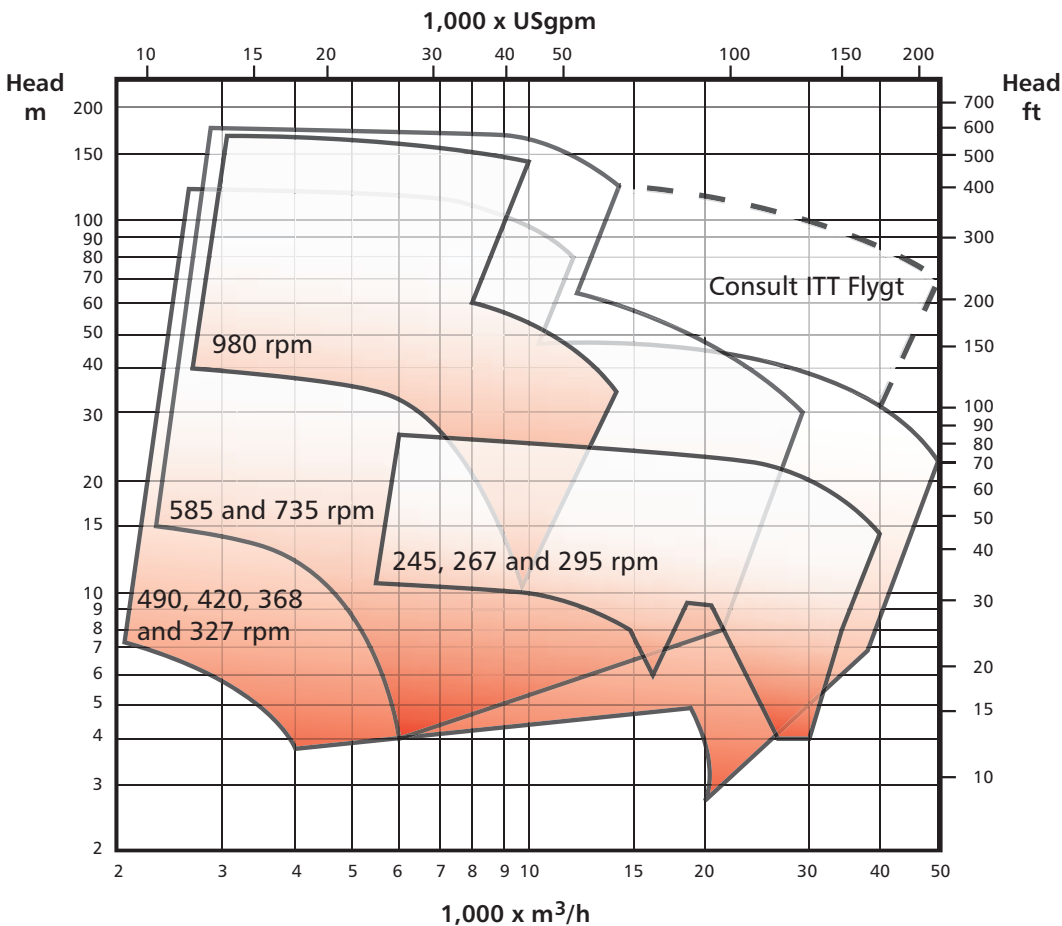
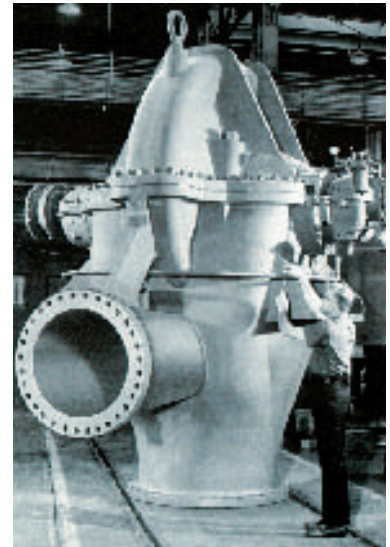
From 650 to 14,200 l/s 10,000 – 225,000 USgpm

Flygt offers a full range of large split-case pumps. Our largest models deliver an incredible 14,200 l/s (225,000 USgpm) and heads up to 190 m (620 ft). We are also the world's leading manufacturer of submersible products for liquid handling solutions. Supplying everything from submersible wastewater pumps and mixers, to control and monitoring systems, we are experts in maximizing reliability and minimizing costs.

Split-case for faster servicing

With a split-case pump you get fast access to the complete rotating element without having to disconnect any piping. By removing the top half of the pump housing, you can inspect and service the inside of your pumps with a minimum of downtime.

The split-case design gives you fast access to the inside of your pumps without having to disconnect the piping.



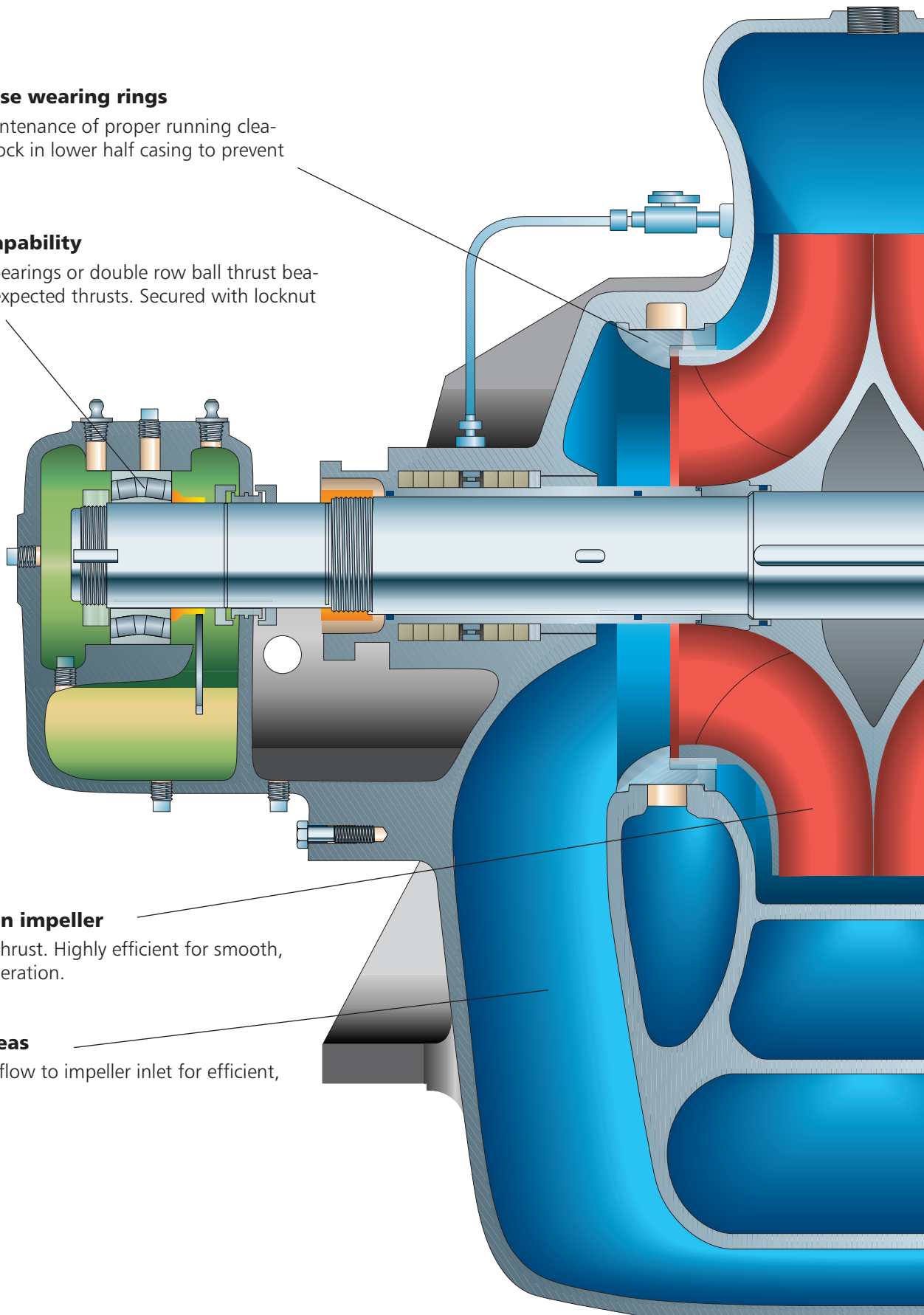
Quality in every detail

Renewable case wearing rings

Permits easy maintenance of proper running clearances. Double lock in lower half casing to prevent rotation.

High thrust capability

Spherical roller bearings or double row ball thrust bearings handle unexpected thrusts. Secured with locknut and washer

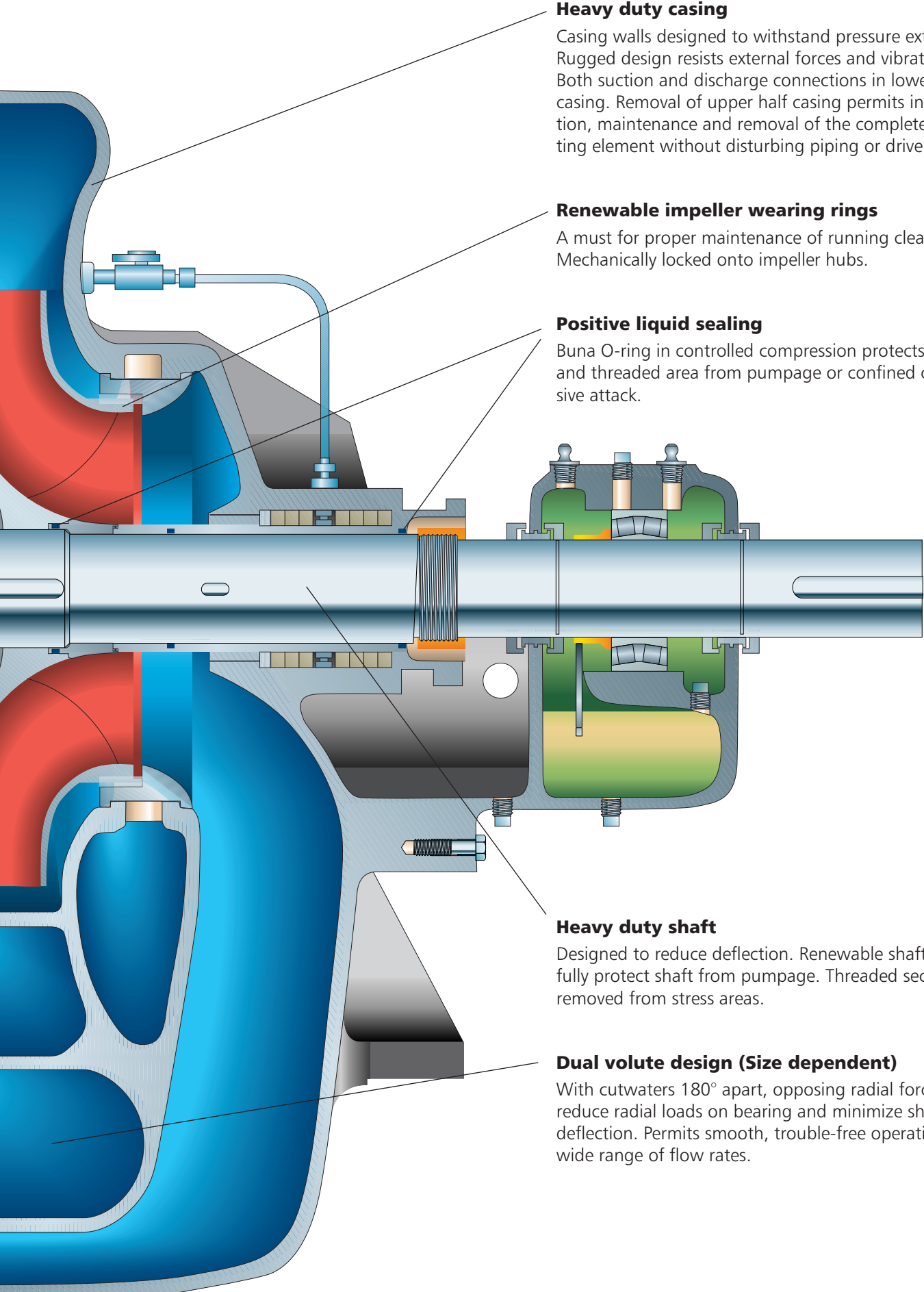


Double suction impeller

Minimizes axial thrust. Highly efficient for smooth, vibration-free operation.

Large inlet areas

Assures smooth flow to impeller inlet for efficient, quiet operation.



Heavy duty casing

Casing walls designed to withstand pressure extremes. Rugged design resists external forces and vibrations. Both suction and discharge connections in lower half casing. Removal of upper half casing permits inspection, maintenance and removal of the complete rotating element without disturbing piping or driver.

Renewable impeller wearing rings

A must for proper maintenance of running clearances. Mechanically locked onto impeller hubs.

Positive liquid sealing

Buna O-ring in controlled compression protects shaft and threaded area from pumpage or confined corrosive attack.

Heavy duty shaft

Designed to reduce deflection. Renewable shaft sleeves fully protect shaft from pumpage. Threaded sections removed from stress areas.

Dual volute design (Size dependent)

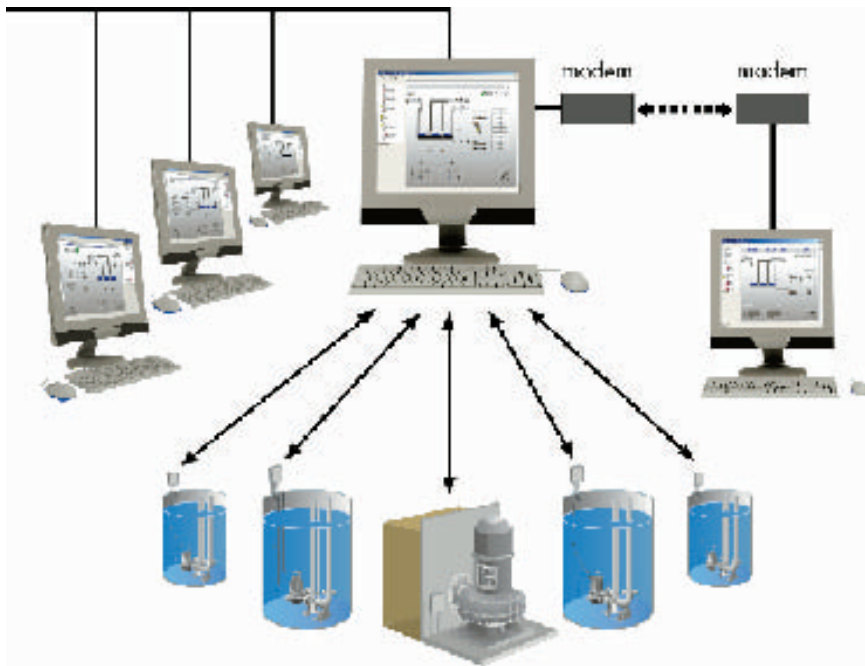
With cutwaters 180° apart, opposing radial forces reduce radial loads on bearing and minimize shaft deflection. Permits smooth, trouble-free operation over wide range of flow rates.

Tailoring total solutions

No other supplier can so perfectly meet your pumping needs as Flygt. We offer the widest range of pumps on the market: everything from a fractional kW output submersible to the world's largest split-case pump. We have unmatched resources, both in terms of manpower and facilities. For instance, we operate the largest water tank in North America for testing pumps before shipping. Flygt is also a one-stop supplier, with a full range of auxiliary equipment including variable speed drives, monitoring and control equipment, expansion joints and control valves. And then we have the experience and know-how to translate your needs into a well-functioning whole.



Reduce service visits and emergency call-outs



Monitoring and control

With a well designed monitoring and control system, service costs can be radically reduced. For example, unnecessary service checks can be eliminated with the help of automatically generated service alerts. And armed with detailed information, you'll be able to slash the number of emergency call-outs.

At Flygt we supply both the hardware and software for complete systems: everything from pump controllers, sensors and start equipment, to the software for running the systems. Add to this Flygt's SCADA supervision software, AquaView, and you get a complete picture of your fluid handling processes.

World-wide service, world-class value

Because no two pumping stations or systems are alike, we let you choose the type of support package that best matches your needs.

At one end, we help in selecting the right pump for a new application. At the other end, we can provide full service assistance that includes everything from system planning and design, through construction and commissioning, to operation and maintenance.

With a world-wide network of authorised service centres, you always get the support you need: whether it's a question of planned maintenance, or express delivery of a part.

Extensive spare parts guarantee

We guarantee the availability of spare parts 20 years after we stop production of a pump model. This is just one of the ways we demonstrate long-term commitment to our customers.



As a leading supplier of fluid handling solutions, Flygt can supply everything you need to design, build and operate pump systems in a safe and cost-effective way.

Our products are used in water supply, wastewater treatment, sewage systems, mines, construction, process industries and numerous other applications.

Flygt is represented in over 130 countries and has more than 40 sales companies around the world.



www.flygt.com