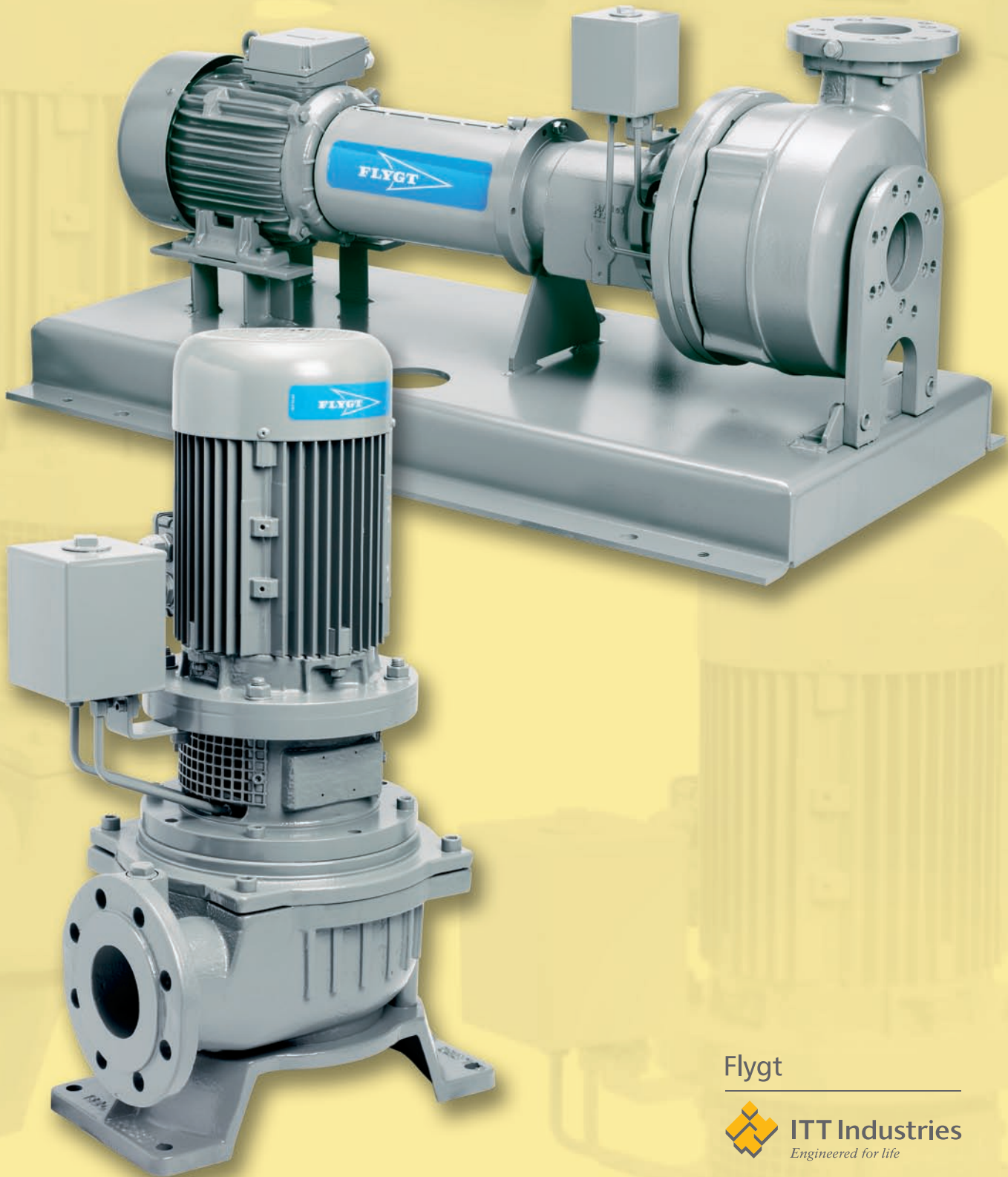




## D 8000 series

Dry-installed vortex pumps



Flygt



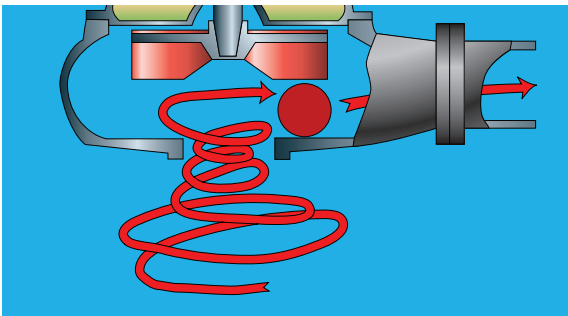
**ITT Industries**  
*Engineered for life*

# Minimize wear, reduce clogging

In a vortex pump, flow is produced not by the actual impeller but by a rapidly rotating vortex that is created by the impeller. This kind of pump offers two major advantages, and one disadvantage.

Because the pumping action is produced by the vortex, solids in the liquid do not come into contact with the impeller itself, thereby minimizing wear. A second advantage is the open design of the volute: positioned high on the roof of the volute, the impeller takes up very little space which leaves a large area through which sizeable solids can freely pass.

On the minus side is efficiency. Precisely because the volute is so open, the hydraulic losses are much greater in comparison with shrouded channel impellers.



A vortex impeller creates a powerful pumping action while leaving a wide, open passage through which solids can pass.

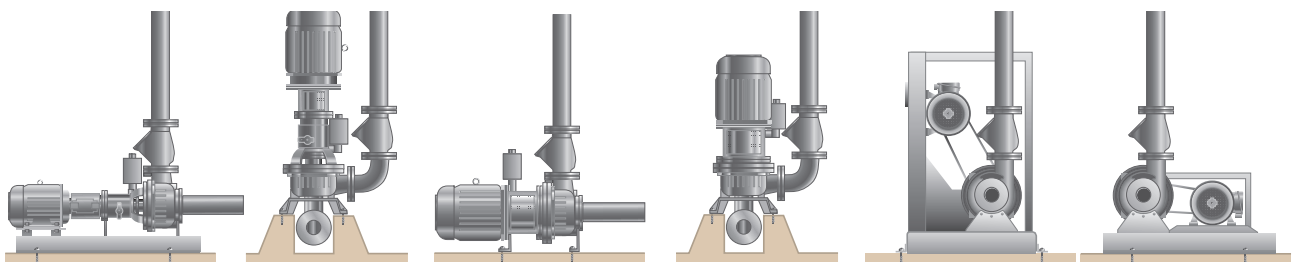
## Why dry-installed pumps?

- Pumps have hardly any influence on solids entering the suction pipe ((Not sure what is meant here. How about: Pumps are virtually unaffected by solids entering the suction pipe))
- Easy installation
- Easy maintenance
- In larger sewage treatment plants, the cost of the infrastructure often justifies using dry-installed pumps
- This can also be the case for pump stations

## Typical applications include:

- General sewage and wastewater pumping
- Sludge recirculation in sewage treatment plants
- Slaughterhouses
- Food processing

# Methods of installation



**HM** Horizontal installation with foundation and electrical motor.

**VM** Vertical installation with support and electrical motor.

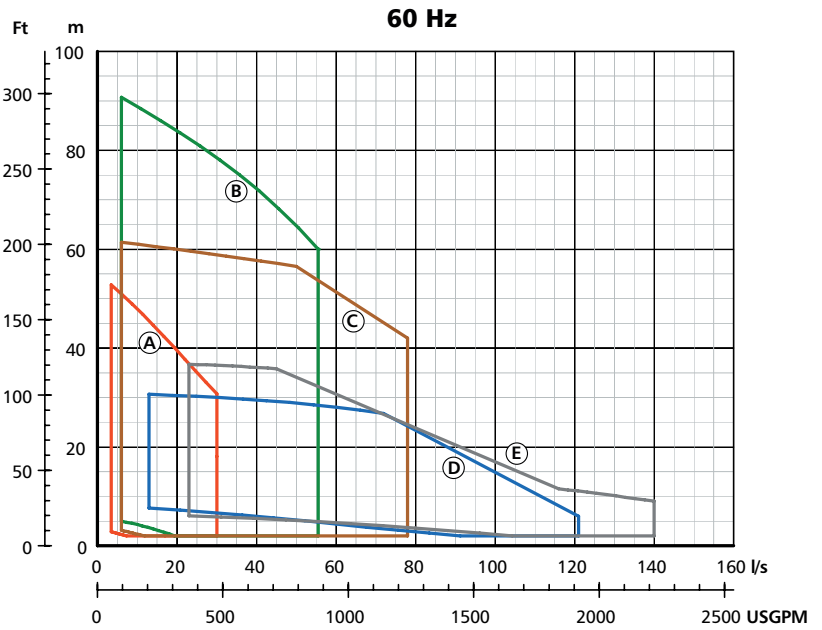
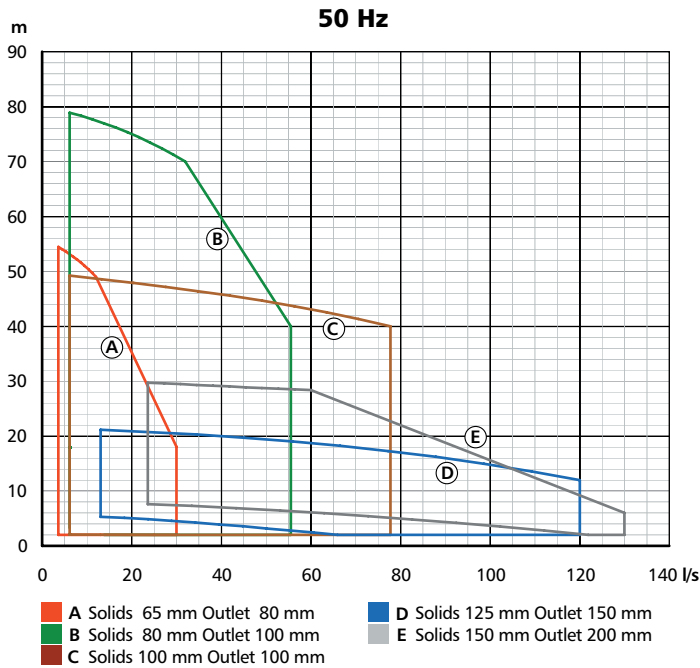
**HS** Short coupled horizontal installation.

**VS** Short coupled vertical installation.

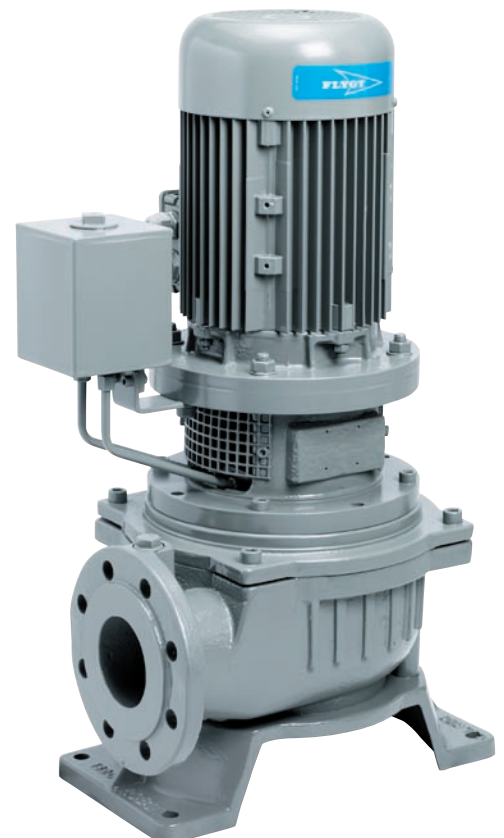
**K** V-belt driven vertical installation.

**L** V-belt driven horizontal installation.

# Pumping capacities up to 130 l/s, 2100 gpm

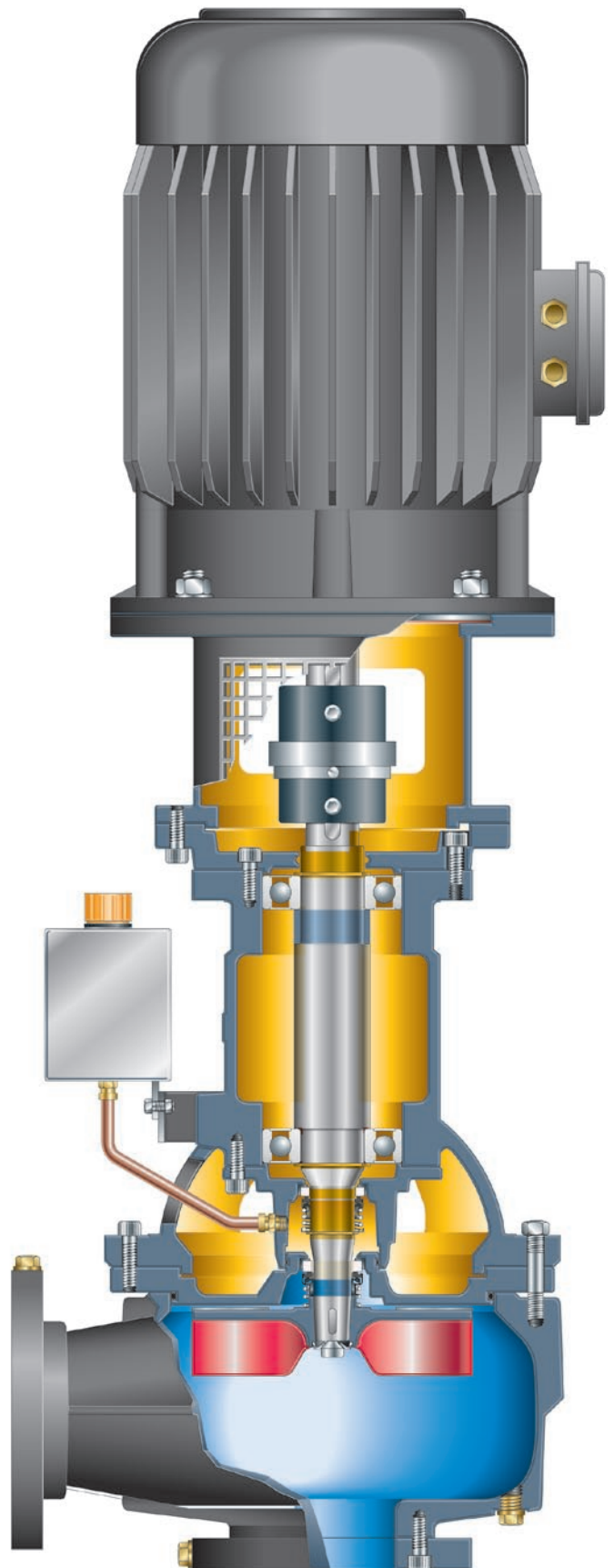
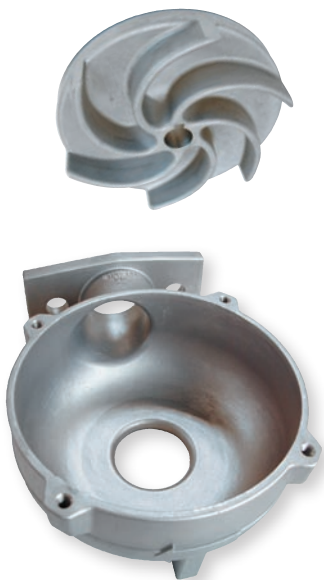


*Flygt dry installed pumps, the ultimate solution for solids handling applications. Above two pumps managing the sewage system at Amsterdam airport "Schiphol".*



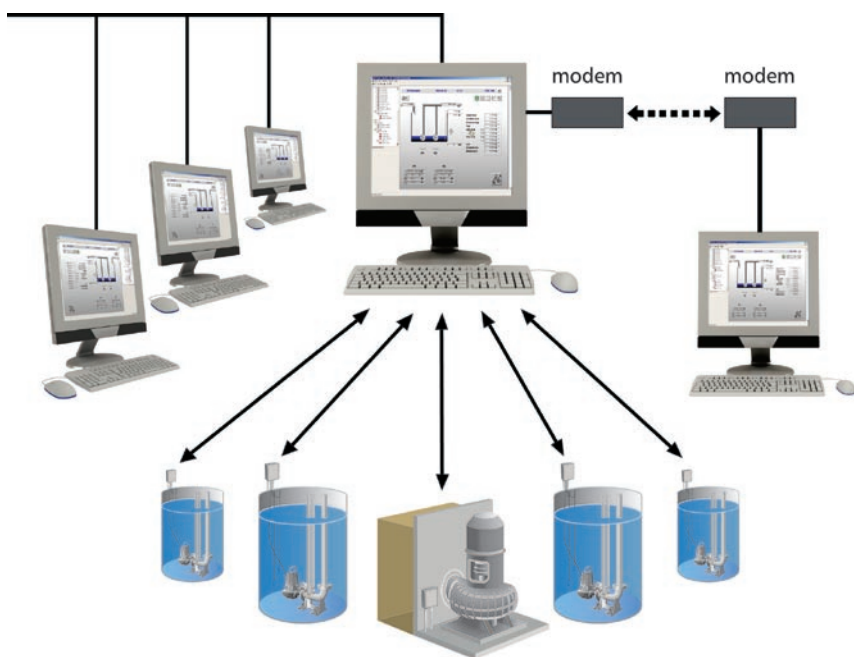
# Design features

- Solids have limited contact with impeller
- Fewer blockages
- Less wear
- No narrow clearances
- No adjustments
- Same design for horizontal and vertical installations – the only difference is the motor support and pump feet
- Horizontal pumps feature flexible coupling with spacer to allow back pull-out
- Closed bearings, greased for life
- Two independent mechanical seals running in oil – allows for dry running
- Mechanical shaft seals in silicon carbide/silicon carbide and carbon/ceramic
- Seal flushing is available as an option
- All pumps equipped with back vanes that:
  - keep solids out
  - reduce seal pressure
  - extend seal life
- Models with 100% stainless steel hydraulics available





# Reduce service visits and emergency call-outs



## Monitoring and control

With a well designed monitoring and control system, service costs can be radically reduced. For example, unnecessary service checks can be eliminated with the help of automatically generated service alerts – armed with detailed information, you'll be able to cut the number of emergency call-outs.

At Flygt we supply both the hardware and software for complete systems: everything from pump controllers, sensors and start equipment, to the software for running the system. With Flygt's SCADA supervision software, AquaView, you get a complete picture of your fluid handling processes.

# World-wide service, world-class value

Because no two pumping stations or systems are alike, we let you choose the type of support package that best matches your needs.

At one end, we help in selecting the right pump for a new application. At the other end, we can provide full service assistance that includes everything from system planning and design, through construction and commissioning, to operation and maintenance.

With a world-wide network of authorised service centres, you always get the support you need: whether it's a question of planned maintenance, or express delivery of a part.

## Extensive spare parts guarantee

We guarantee the availability of spare parts 15 years after we stop production of a pump model. This is just one of the ways we demonstrate long-term commitment to our customers.



ITT Flygt is the world's leading manufacturer and supplier of submersible pumping and mixing solutions. Flygt products are used within construction, mining, wastewater handling and a wide range of other industries.

With over 50 years of experience, we can help deliver reliable and cost-effective water-handling solutions. ITT Flygt has sales and service centres in more than 130 countries around the world.



[www.flygt.com](http://www.flygt.com)